

# Youth Leader Academy

P.O. Box 664, Brookfield, WI 53008-0664

<http://ylaus.com/>

Dear YLA Members,

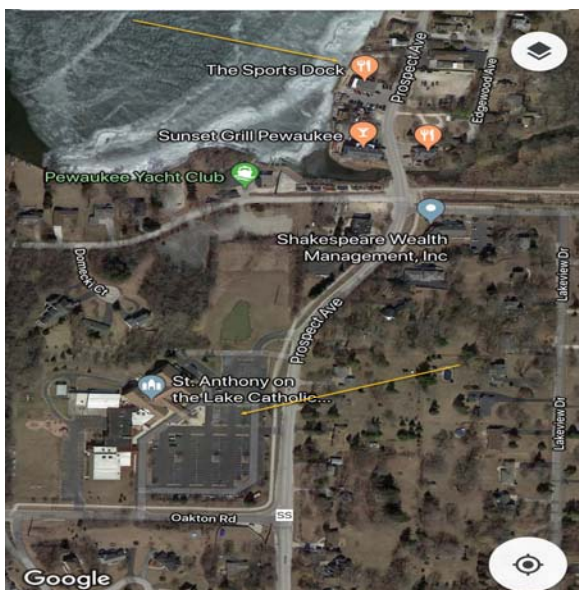
The Dragon Boat Festival is just around the corner. It is one of the biggest events YLA participates in and plays a critical role. In addition to the different YLA booths onsite, we have a team partaking in the race. Volunteer registration should have been collected by booth chairs. Please find direction, parking, layout and additional information in this Newsletter.

-YLA Executive Board

## YLA Team Practice @ Pewaukee Lake

6:00pm – 7:00pm on Aug 6 & 7:00pm – 8:00pm on Aug 8

Direction: Get on I-94 west bound, take exit 290, turn right onto County Rd SS/Prospect Ave, park your car at St. Anthony on the Lake Catholic Church on your left, then walk down the street to Gina's Sports Dock. Contact Reena Yuan if any questions about the practice [19yuanr@elmbrookstudents.org](mailto:19yuanr@elmbrookstudents.org)



## Upcoming Events

### August 11

Dragon Boat Festival @ Lakeshore State Park (LSP)

### October 5

China Lights

## Event Schedule @ LSP

- 7:00am – 9:00am Team Registration
- 8:00am – 10:30am Round 1 Race
- 10:30am – 11:15am Lion Dance and Opening Ceremony
- 11:15am – 12:00pm Performances
- 11:15am – 1:30pm Round 2 Semi-Final Race
- 1:45pm – 4:15pm Round 3 Final Race
- 4:30pm – 5:00pm Award Ceremony

## Lakeshore State Park

### Direction

South entrance is the only entrance with free parking for volunteers. Set Milwaukee Sail Loft” (649 E Erie St, Milwaukee, WI 53202) as your GPS destination, once you see Milwaukee Sail Loft, turn left at the end of the road. Continue to drive on the road along the river toward the red light house; you are now in Lakeshore State Park. Follow the road under the Hoan Bridge, and continue until the road swings to the left (north). Park anywhere along the road where not prohibited. The south pedestrian entrance to the "island" portion of Lakeshore is located on the northeast portion of the large turn-around at the end of the road – no vehicles are allowed after this point.

### Parking

- Volunteers to park along E. Erie street up until Park South entrance for free, first come first serve
- Race team parking in Summer Fest Lot P for \$5 (Picture below)



### Volunteers Logistics

- Volunteers report to Booth Chairs on the day of the event at the scheduled shift
- Booth Chairs pick up volunteer t-shirts and lunch tickets at the Registration booth in the morning
- Booth Chairs pick up volunteer lunch at the Registration booth at noon

# Park Layout for Event Day

